



BELT CONVEYOR GUARDING

LEADING STEEL CONVEYOR GUARDING
FOR HARSH ENVIRONMENTS

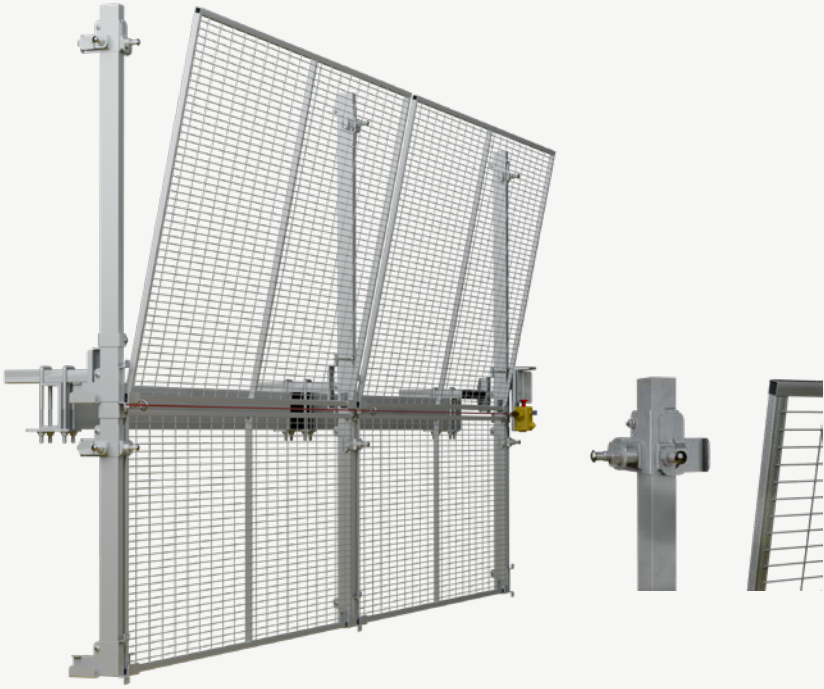
PROTECTING PEOPLE, PROPERTY, AND PROCESSES.



TAKE CONTROL OF YOUR SAFETY.

BELT CONVEYORS can be used in a wide range of industries, from manufacturing and warehousing to mining. Troax's belt conveyor guards have been developed together with the Swedish mining industry. In that way, we know that our steel guards can be used in harsh environments, but also everywhere in between where there's a risk

of people getting hit by heavy goods such as rocks or accidentally falling into the belt and getting their arms entangled in the rollers. Our guarding system is designed to keep people safe and provide peace of mind, all while being easy to install, disassemble, and reassemble. Don't roll with it – take control with Troax.



EASY TO USE, MADE TO LAST.

PROTECTING PEOPLE, PROPERTY, AND PROCESSES.

- EASY TO DISMOUNT DURING SERVICE AND MAINTENANCE WORK
- HOT DIP GALVANIZED COATING FOR GOOD CORROSION PROTECTION
- FIX TO THE FLOOR OR DIRECTLY ONTO THE BELT CONVEYOR BEAMS

THE PERFECT FIT.

SAFE AND RELIABLE EVERY DAY

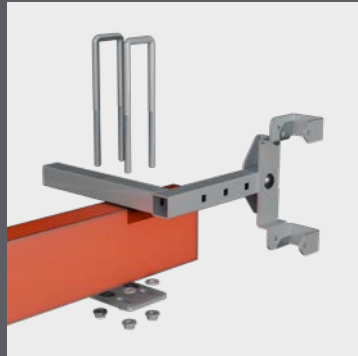
Troax's system is easy to install onto belt conveyors in various kinds of industries. You can also use the system in harsh environments under extreme conditions. All assembly parts and pre-assembled fixings have hot-dip galvanized surface coatings, providing good corrosion protection. The system is made of robust steel and is tested to withstand an impact of 1,600 Joules. That's the equivalent of an object weighing 100 kg hitting the guard from the inside at 20 km/h. In other words, Troax's system keeps people out of harm's way and can handle the toughest challenges. Year in, year out.

ANY WAY YOU WANT IT

The system is designed with our standard posts, tubes, and ST20

panels combined with special fixings to hold the panels in a horizontal position along with special fixings to the beams. Our beam supports are easily installed onto the belt conveyor beam using U-shaped holders. These holders clamp around the beam, giving support on each side. They're available in three different sizes: 235 mm, 285 mm, and 335 mm. By combining the straight and angled beam supports with various panel lengths, you can design the perfect solution.

FOLLOW ME FOR
INTERACTIVE
ASSEMBLY
INSTRUCTIONS





SAFETY FROM YOUR PERSPECTIVE.

In traditional machine guards, our ST20 panels are mounted vertically, but not in systems like these. Instead, the panels are mounted horizontally. The height of the panel thus becomes the length of the panel. By turning our mesh panels horizontally, we can provide easier access above and under the emergency stop rope. You can choose from different standard panel dimensions to fit your application in all directions.

SMOOTH OPERATOR

The Belt Conveyor Guarding system is designed with both safety and convenience in mind. A hook for the emergency stop rope can be placed in the lower fixings, ensuring that the conveyor belt can be easily shut down. The upper fixings keep the panels in place with a turnable bracket for easy release during service and maintenance. To remove a panel, the service technician releases two bolts on the upper panel and simply turns the brackets.

STANDARD YET SPECIAL.

FIXING PLATE FOR EMERGENCY STOP

The fixing plate can be mounted onto any of the fixing variants, on the end fixing as well as on a straight bracket in the middle of a row. It's designed to fit version ZB0071 72 73.

FIXING PLATE FOR MEZZANINE FLOORS

With the fixing plate for mezzanine floors, you can mount our standard 60×40 posts onto the plate and fix it through the mezzanine floor with J-hooks.

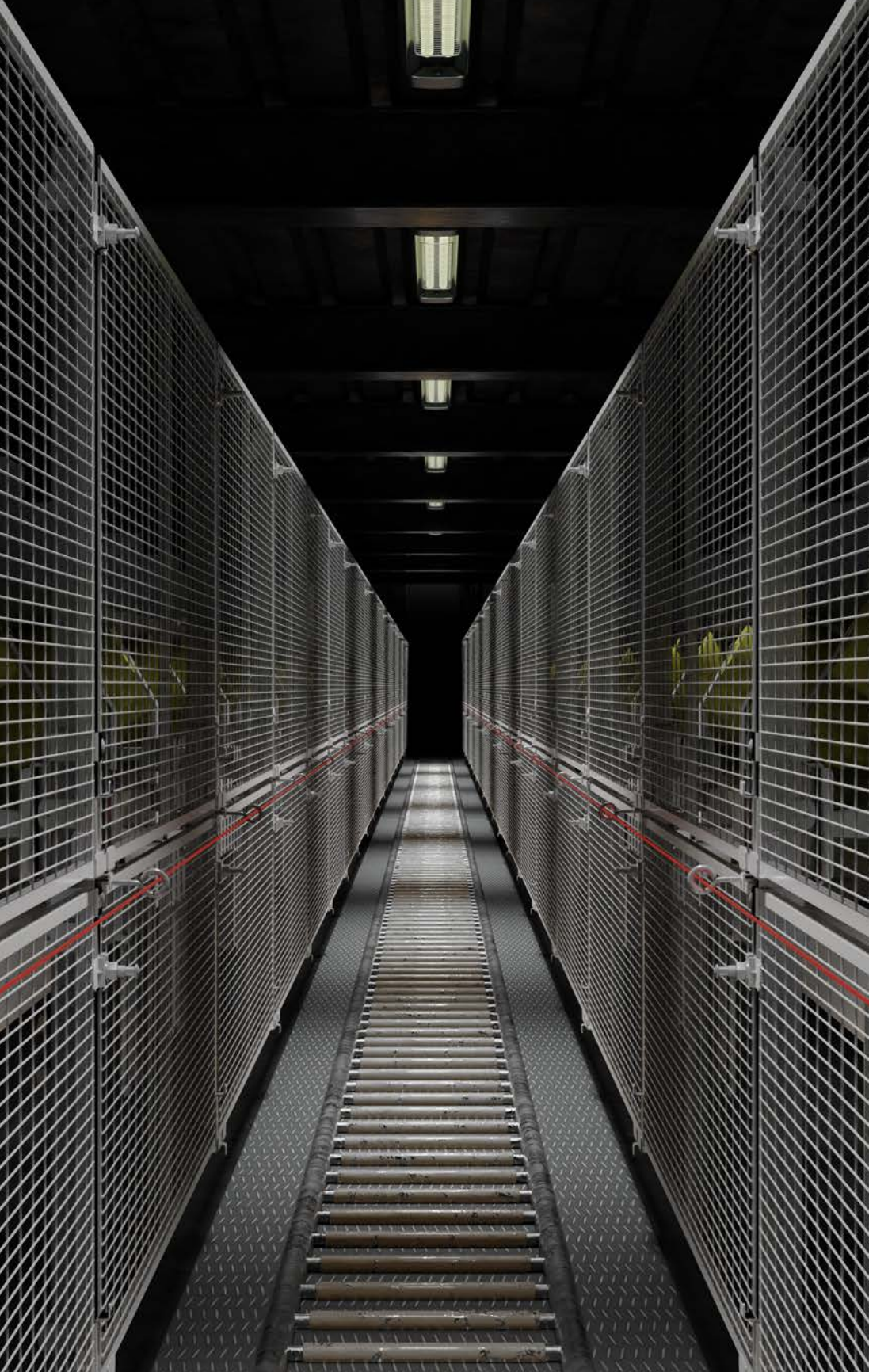
WEDGE-LOCKING WASHERS

To secure the bolted joints from coming loose due to severe vibrations, the system can be equipped with wedge-locking washers. This feature creates a secure connection.

DOOR AND HATCH LOCK

The guarding system has a unique door lock for hinged doors and hatches, specially designed for harsh conditions in environments where there's a high risk of corrosion.





A SAFER TOMORROW
■ SINCE 1955 →

