

# DOORS & HATCHES

When a door is created in our SafeCAD drawing tool, it automatically generates the parts required to build the door. Doors are assembled on site and can be built as either a hinged or a sliding door. It's also possible to make hatches, with either hinged or sliding door function.

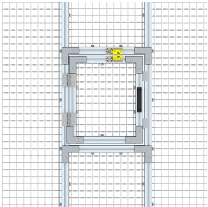


## FACTS

ART. NO	COMPONENTS
15500000	Guide rail, Alu Cutted M (A56 2TLA040037R4900)
15500001	Suspension wheel (D5 2TLA040033R0400)
15500002	Sliding element, rect. (D6 2TLA040033R0500)
15500003	Sliding element, round (D7 2TLA040033R0600)
15500004	Sliding element, guide (D8 2TLA040033R0700)
15500005	Guiding pin vertical (D12 2TLA040033R2200)
15500006	Guiding pin horizontal (D12A 2TLA040033R2300)
15500007	Guiding bracket (D12B 2TLA040033R2400)
15500008	Doorstop vertical (D13 2TLA040033R2500)
15500009	Doorstop angular (D13A 2TLA040033R2600)
15500010	Doorstop horizontal (D13B 2TLA040033R2700)
15500011	Crossbar 1160mm (D14 2TLA040033R2800)
15500012	Crossbar 400mm (D14A 2TLA042021R7300)
15500013	wheel with locking brake (D9 2TLA040033R0800)
15500014	wheel with locking brake (D9-K 2TLA040033R1100)

ART. NO	COMPONENTS
15500015	wheel with locking brake (D9A 2TLA040033R1200)
15500016	wheel with locking brake (D9A-K 2TLA040033R1300)
15500017	Hinge with screw C/C 47 (35-K 2TLA040033R1400)
15500018	Hinge with screw C/C 62 (D1A 2TLA040033R1500)
15500019	Black Handle (D2 2TLA040033R0100)
15500020	Door Closer Kit (D3 2TLA040033R0200)
15500021	Pullock (D10 2TLA040033R2000)
15500022	Pullock Extended (D10A 2TLA040033R2100)
15500023	Door Bolt With Spring (D10B 2TLA040033R3800)
15500024	Ball Latch (D11B 2TLA040033R4100)
15500025	Ball Latch Sliding Door (D11C 2TLA040033R4200)
15500026	Hinge C/C 45 Plastic (D1C 2TLA040033R4800)
15500027	Padlock Hasp Bracket (D17 2TLA042020R2200)
15500028	Handle Incl. Spacer Angle (D18 2TLA042020R5000)
15500029	Door Closer Sliding Door (D19 2TLA042020R5600)
15500030	Compact Rail Kit (TLV-28 2TLA042103R0600)
15500031	Trolley CSW28-80 (CSW28-80 2TLJ042024R2000)
15500037	Sliding Hatch Element JSM D26 2TLA042020R3700
15502000	Guide Rail Alu 2000mm (A56-2000 2TLA040037R0800)
15506000	Guide Rail Alu 6000mm (A56-6000 2TLA040037R4800)
15506101	Guiding rail 6100mm JS A3130C 2TLA040037R9900
15890025	Boxlock Knob (2TLJ042020R1300)

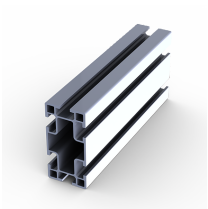
# ACCESSORIES



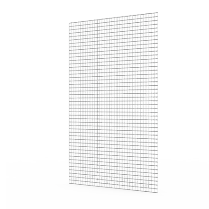
BRACKET FOR  
SWITCHES

---

# COMBINE WITH



ALUMINIUM  
PROFILES



MESH INFILLS



POLYCARBONATE  
INFILL

# IMAGES

